

Commercial
LED
Lighting

PRODUCT GUIDE



OFFICE | WAREHOUSE | REFRIGERATION | OUTDOOR



About Innovative Lighting

Innovative Lighting entered the lighting industry in 1993 by producing lighting products for the boating industry. In four short years, we began producing lighting using Light Emitting Diodes, or LEDs. As LED lighting evolved, our innovative engineers enhanced the light emitted from these diodes by designing and using proprietary optics to focus the light where it needed to be.

Nearly two decades later, Innovative Lighting continues to be a market leader that provides thousands of domestic and international companies with a diverse line of energy-efficient, dependable LED lighting products. Our technically advanced, best-in-class, LED lighting solutions are expertly crafted to exact standards and specifications in three leading-edge production facilities in America's heartland where our quality construction is a source of pride.

Our Products

We carry high quality products and brands including Cree, Philips, Innovative Lighting, Ruud, Digital Lumens, and MaxLite. Through these relationships with our trusted manufacturing partners, we have been able to provide valuable advice and recommendations to help drive what is next for commercial LED lighting systems.

Schedule your **FREE** lighting analysis

515-777-7444
www.innovativelight.com

LED Linear T5



LED T5 lamps are quick, easy and safe to install into existing linear fluorescent fixtures without any extra effort or re-wiring.

Designed to deliver 3500 lumens, the lamps utilize the existing T5HO electronic and program start ballasts, minimizing maintenance and labor costs for facility managers.



Part Number	Equivalent	Size	Wattage	Color	Lens	Life (Hours)	Wty (Yrs)	Lumens	Ballast	Std Pack	DLC/ES #
724-6054-1	F54T5HO	4'	27W	4000K	Frosted	50,000	5	3500	Y	25	PC4GC6FX
724-5054-1	F54T5HO	4'	27W	5000K	Frosted	50,000	5	3500	Y	25	PCTY9TCE

LED Linear T8 Optifit



The **OptiFIT** LED TUBE fits into existing electronic ballast configurations without any additional modification to the fluorescent fixture. Simply slide these into place and start saving energy. Ballasts can also be bypassed entirely as this lamp can be run on direct line voltage.



Part Number	Equivalent	Size	Wattage	Color	Lens	Life (Hours)	Wty (Yrs)	Lumens	Ballast	Std Pack	DLC/ES #
729-6024B-1	F32T8	4'	18W	4000K	Frosted	50,000	5	2400	Y	30	PBQYNPSN
729-5024B-1	F32T8	4'	18W	5000K	Frosted	50,000	5	2400	Y	30	PTDF55FJ

LED Linear T8 Glass



A solid glass linear LED T8 with a 330° beam angle perfect for office, retail and showroom environments. This lamp compliments Innovative Lighting's full line of T8 replacement lamps.

Available in both ballast compatible (direct fit) and ballast bypass configurations.



Part Number	Equivalent	Size	Wattage	Color	Lens	Life (Hours)	Wty (Yrs)	Lumens	Ballast	Std Pack	DLC/ES #
729-6024T-1	F32T8	4'	18W	4000K	Frosted	50,000	5	2000	Y	25	PNPYM23U
729-5024T-1	F32T8	4'	18W	5000K	Frosted	50,000	5	2000	Y	25	PE3TUM1P
729-6024E-1	F32T8	4'	18W	4000K	Frosted	50,000	5	2000	N	25	PC9B3EFK
729-5024E-1	F32T8	4'	18W	5000K	Frosted	50,000	5	2000	N	25	PH3AVUZA

Ultra Thin Troffer



Enjoy seamless light distribution and incredible light output in a package under 1/2" thick. Beyond modern in appearance and performance, this fixture has no visible diodes and is glare-free.

The Ultra Thin Troffer is a perfect retrofit option for fluorescents in a drop ceiling.



Part Number	Size	Wattage	Color	Lens	Life (Hours)	Wty (Yrs)	Lumens	Ballast	Std Pack	DLC/ES #
781-6222-1	2'x2'	40W	4000K	Frosted	50,000	5	5000	N	4	PBUGFAQT
781-5222-1	2'x2'	40W	5000K	Frosted	50,000	5	5000	N	4	PREXTYEV
781-6214-1	1'x4'	40W	4000K	Frosted	50,000	5	5000	N	4	PTR39BT3
781-5214-1	1'x4'	40W	5000K	Frosted	50,000	5	5000	N	4	P5CGTSBP
781-6224-1	2'x4'	50W	4000K	Frosted	50,000	5	6250	N	4	PVP2G5ZZ
781-5224-1	2'x4'	50W	5000K	Frosted	50,000	5	6250	N	4	P7D4ZS7N

LED A19 Bulbs



Award-winning, ENERGY STAR®-qualified LED Omnidirectional A-Line lamps replicate true A19 and A21 incandescents with a 300-degree beam angle that produces even light in all directions. Available in two wattages (9W, 11W), the lamps replace 60-100W incandescent bulbs with more than 80 percent savings in energy.

Omnidirectional A-Line lamps are suited to a wide variety of residential and commercial applications including: pendants, wall sconces, table lamps, and floor lamps. They are dimmable down to 10 percent on a wide variety of dimming control systems.

ENERGY STAR®-qualified models are available.

Part Number	Type	Equivalent	Wattage	Color	Lens	Life (Hours)	Wty (Yrs)	Lumens	Ballast	Std Pack	DLC/ES #
U-A19009T018UW3	A19	60W	9W	3000K	Frosted	25,000	5	900	N	50	Energy Star
U-A19009T018UW4	A19	60W	9W	4000K	Frosted	25,000	5	900	N	50	Energy Star
U-A19011T030UW3	A19	75W	11W	3000K	Frosted	25,000	5	1100	N	50	Energy Star
U-A19011T030UW4	A19	75W	11W	4000K	Frosted	25,000	5	1100	N	50	Energy Star

LED BR Lamps



The highly efficient LED family of lamps replace up to 120-watt incandescent lamps, significantly reducing consumers' carbon footprint while maintaining a very high quality of light.

The LED BR lamps are the ideal lighting solution for recessed and architectural residential, retail, office space, and hospitality applications.

ENERGY STAR®-qualified models are available.



Part Number	Type	Equivalent	Wattage	Color	Lens	Life (Hours)	Wty (Yrs)	Lumens	Ballast	Std Pack	DLC/ES #
U-DBR20007T012W	BR20	50W	7W	3000K	Frosted	25,000	5	480	N	50	Energy Star
U-DBR20007T012N	BR20	50W	7W	4000K	Frosted	25,000	5	480	N	50	Energy Star
U-DBR30011T012W	BR30	75W	11W	3000K	Frosted	25,000	5	800	N	50	Energy Star
U-DBR30011T012N	BR30	75W	11W	4000K	Frosted	25,000	5	800	N	50	Energy Star
U-DBR40017T030W	BR40	100W	17W	3000K	Frosted	25,000	5	1300	N	30	Energy Star
U-DBR40017T030N	BR40	100W	17W	4000K	Frosted	25,000	5	1300	N	30	Energy Star

PAR Lamps



Providing better quality light than CFL lamps and offering superior cost savings to incandescent alternatives, LED PAR lamps are available in 3000K (warm white), 4000K (neutral white), 5000K (day-light) correlated color temperature (CCT) light and deliver high-quality light in retail, residential, recessed, track lighting and architectural lighting.

P.A.R.

**Parabolic
Aluminized
Reflector**

ENERGY STAR®-qualified models are available.



Part Number	Equivalent	Wattage	Color	Lens	Life (Hours)	Wty (Yrs)	Lumens	Ballast	Std Pack	DLC/ES #
U-102179	75W	12W	3000K	Striated	25,000	5	850	N	12	Energy Star
U-102271	75W	12W	4000K	Striated	25,000	5	850	N	12	Energy Star
U-102181	120W	15W	3000K	Striated	25,000	5	1050	N	12	Energy Star
U-102272	120W	15W	4000K	Striated	25,000	5	1050	N	12	Energy Star
U-73658 (Wet)	150W	17W	4000K	Striated	25,000	5	1300	N	12	---
U-73696 (Wet)	150W	17W	5000K	Striated	25,000	5	1300	N	12	---

* More versions available upon request

PL Lamp Retrofits

PL Lamps are a plug-and-play replacement for CFL bulbs in downlights, sconces and other four-pin base fixtures commonly used in commercial buildings. The 13-watt LED lamps operate directly off of the existing ballast, allowing facility managers to reap the energy-saving benefits of LED technology in the most cost-effective way.

Offered in two designs to suit horizontal or vertical mounting position, PL Lamps plug right into the existing four-pin socket (G24q) without any extra labor or re-wiring, making the switch to more efficient lighting seamless.



Part Number	Type	Equivalent	Wattage	Color	Lens	Life (Hours)	Wty (Yrs)	Lumens	Ballast	DLC/ES #
U-74862	PL Horiz	26W	13W	2700K	Frosted	25,000	5	1000	Y	---
U-100947	PL Horiz	26W	13W	4000K	Frosted	25,000	5	1000	Y	---
U-100950	PL Vert	26W	13W	4000K	Frosted	25,000	5	1000	Y	---

* More versions available upon request

LED 5"-6" Retrofit Downlight

The 5"-6" Retrofit Downlight delivers high lumen output and exceptional efficiency in a convenient package.

High efficiency LEDs will outperform its incandescent replacement in both light output and power consumption.

Retrofit Downlights have the added benefit of sealing the can light opening/ceiling penetration. This eliminates the air loss to the attic and greatly improving insular value.

Torsion springs and trim ring allow easy installation in new construction or retrofit applications.



Part Number	Size	Equivalent	Wattage	Color	Lens	Life (Hours)	Wty (Yrs)	Lumens	Ballast	Std Pack	DLC/ES #
783-0160-1B	5"-6"	75W	11W	3000K	Frosted	50,000	5	950	N	10	Energy Star
783-6160-1B	5"-6"	75W	11W	4000K	Frosted	50,000	5	950	N	10	Energy Star

FTF Series Troffer

These LED Troffers are the perfect solution for any commercial office setting. Coming in multiple wattages, dimensions, and color temperatures these troffers offer an incredible array of options that can satisfy your specifications. These lights are dimmable which allows us to offer multiple lighting controls as well. The incredibly thin, light weight design and multiple mounting options allows for an easy installation of these troffers.



Part Number	Size	Wattage	Color	Life (Hours)	Lumens	Ballast	Dimming	DLC/ES #
781-0314-1	1'x4'	25W	3500K	100,000	3000+	N	1-10V	**NOT LISTED**
781-0322-1	2'x2'	25W	3500K	100,000	3347	N	1-10V	P83TZAXB
781-0324-1	2'x4'	50W	3500K	100,000	5928	N	1-10V	P9C3F64X
781-6314-1	1'x4'	25W	4000K	100,000	3000+	N	1-10V	**NOT LISTED**
781-6322-1	2'x2'	25W	4000K	100,000	3347	N	1-10V	PYHV2C81
781-6324-1	2'x4'	50W	4000K	100,000	5928	N	1-10V	PD1ECTVR
781-5314-1	1'x4'	25W	5000K	100,000	3000+	N	1-10V	**NOT LISTED**
781-5322-1	2'x2'	25W	5000K	100,000	3459	N	1-10V	PDBFJY7D
781-5324-1	2'x4'	50W	5000K	100,000	6077	N	1-10V	PKJR3UWJ

High Output LED Retrofit Lamp (Corn Cob)



High Output LED Retrofit Lamps are high lumen and energy efficient replacements for Metal Halide (MH), High Pressure Sodium (HPS), and Mercury Vapor (MV) lamps. Ideal for warehouses, parking garages, factories, and large shopping facilities.

High Output LED Retrofit Lamps come in E39 Mogul Bases allowing for a *direct retrofit into existing fixtures.

*An electrician must bypass existing ballast before installation.

Optional accessories: Socket Extension (*Innovative Part # U-AM901801*)



Part Number	Size	Wattage	Color	Lens	Life (Hours)	Wty (Yrs)	Lumens	Ballast	Std Pack	DLC/EC #
U-CLCN40A	175W MH	40W	5000K	NA	50,000	5	4800	N	12	PRVKFPEK
U-CLCN60A	175W MH	60W	5000K	NA	50,000	5	7200	N	12	PBJ62MA4
U-CLCN80N	250W MH	80W	5000K	NA	50,000	5	9600	N	12	PMFEXMAH
U-CLCN120N	400W MH	120W	5000K	NA	50,000	5	14,500	N	12	P68TCWW8

LED High Bay



Improved light quality, longer service life, reduced energy consumption and reduced maintenance make switching to LED High Bay Lighting a no-brainer.

Easy to install and up to 70% more efficient, the LED High Bay fixtures also provide one of the lowest costs of ownership.

A large variety of output options make this fixture versatile, replacing metal halides from 400W to 1000W.

Optional accessories: Motion sensors, dimming, protective cage, frosted lenses, shades/cover.



Part Number	Equivalent	Wattage	Color	Lens	Life (Hours)	Wty (Yrs)	Lumens	Ballast	Std Pack	DLC/ES #
726-5101-1	400W MH	160W	5500K	Clear	50,000	5	24,000	N	1	P4WE8SJK
726-5201-1	***	180W	5500K	Clear	50,000	5	27,000	N	1	PKHZAHTG
726-5301-1	***	200W	5500K	Clear	50,000	5	30,000	N	1	PTQIXSHD
726-5410-1	1000W MH	240W	5500K	Clear	50,000	5	36,000	N	1	P9BJWK9C

SmoothLite

The SmoothLite LED linear lighting products provide an even distribution of high output light. Highly efficient midpower LEDs running at constant current make the linear SmoothLite an excellent solution for a variety of lighting needs.

The SmoothLite LED linear lighting products are designed for both new and retro-fit projects.

High quality 6063 extruded aluminum is used for all of the rails adding strength, and serving as an onboard heat sink to extend the life of the LEDs. All lights mount to intended services using a simple and highly impact resistant polycarbonate mounting clip.



Part Number	Size	Wattage	Color	Lens	Life (Hours)	Wty (Yrs)	Lumens	Ballast	DLC/EC #
785-5226-1	6'	99.0W	5000k	Frosted	120,000	5	10800	N	P00000WY4
785-6226-1	6'	99.5W	4000k	Frosted	120,000	5	10350	N	P00000WVZ
785-6224-1	4'	65.6W	4000k	Frosted	120,000	5	6772	N	P00000WY3

* Also available in IPG6 version

F-Series Refrigeration & Cooler Lamps



LED Cooler and Freezer lamps are a high value combination of design and performance features. For use in freezer case lighting, these universal voltage lamps have an integrated driver with an exceptionally long life.

The F-series is non-dimmable, and is suitable for damp locations.

Daisy chain capabilities allows for continuous light connection.

Mounting: U-clips included for easy mounting to any flat surface.

Optional accessories: U-1409061 refrigeration light Y-splitter cord.



Model #	Wattage	Color	Lens	Life (Hours)	Wty (Yrs)	Lumens	Ballast	Std Pack	DLC/ES #
U-107991	22W	4000K	Clear	50,000	5	1,810	N	1	PD82P19Z
U-107992	26W	4000K	Clear	50,000	5	2,170	N	1	PIXRP7F8

Innovative Lighting EcoBrite Series

The R-Series 751 Vertical Door Light, 734 EndLite, and 771 Horizontal Case Canopy LED lights illuminate refrigerated cases, coolers, and horizontal displays.

Using patented Precision Optical Performance technology, the R-Series products are able to efficiently distribute light throughout displays. The R-series works great on new OEM cases or as a seamless retrofit replacement for existing fluorescent lighting.



◀ 771 R-Series
(Horizontal case canopy)



▲ 751 R-Series
(Vertical center fixture)

▲ 734 R-Series
(Vertical end fixture)



Type	Size	Wattage	Color	Lens	Life (Hours)	Wty (Yrs)	Lumens	Ballast	DLC/EC #
751	5', 6'	14W-22W	3500-4000K	Optics	80,000	5	1060-1580	N	P00000WWP
734	5', 6'	12-18W	4000K	Optics	80,000	5	400-600	N	P00000WW3
771	4', 6'	14W, 22W	3500-4000K	Optics	80,000	5	1150-1750	N	P00000WWZ

* More versions available upon request



4' LED Vapor Tight Fixture

IP65 Rated Waterproof LED Vapor Tight fixture provides LED brightness and efficiency in the harshest of environments.

Perfect for car washes, stairwells, airports, tunnels, maintenance areas, parking garages and more.

Included mounting hardware provides both surface mount or suspension mount options.



**BEST
SELLER**



Mounting hardware is ► included with the LED Vapor Tight Fixture.

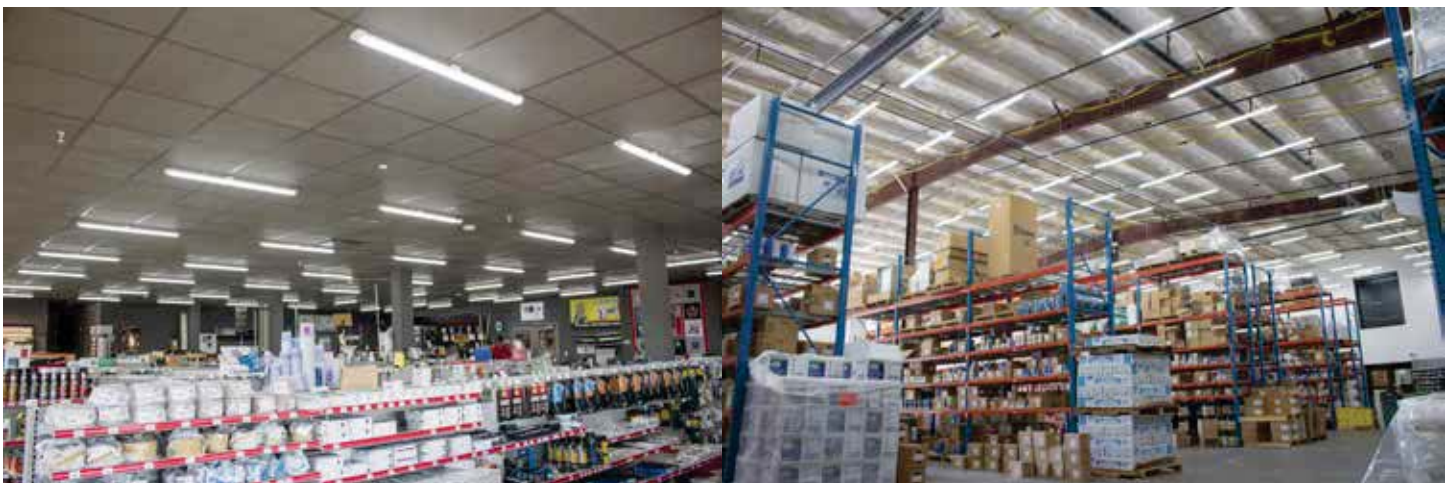
◀ Vapor tight lighting suspension.



◀ Daisy chain (U-TP4FT45WNAMH) with fixture connected by flex-conduit.



Part Number	Size	Wattage	Color	Lens	Life (Hours)	Wty (Yrs)	Lumens	Ballast	DLC/ES #
U-TP4FT45WNA	4'	45W	5000K	Frosted	50,000	5	5400	N	PSHSDHNK
U-TP4FT45WNAMH (Daisy-Chain)									
U-TP4FT45WNAS									



LED Flood Lights

Slim LED Flood Lights create bright, shadow-free security and spot lighting for a variety of outdoor applications, including facades, landscapes, public places, retail and residential complexes. Choose from three power levels to replace 100-watt quartz halogen through 250-watt metal halide fixtures.



Part Number	Equivalent	Wattage	Color	Lens	Life (Hours)	Wty (Yrs)	Lumens	Ballast	DLC/ES #
U-APL0220W5B	150W MH	20W	5000K	Clear	50,000	5	2400	N	P95NDTK2
U-APL0330W5B	175W MH	30W	5000K	Clear	50,000	5	3400	N	P5NNGHA6
U-APL0550W5B	250W MH	50W	5000K	Clear	50,000	5	5850	N	P9T8T8K3

LED Shoebox Light



▲ Trunnion mount shown above.



Slip-fitter mount shown to the right.

High efficiency driver combined with extremely efficient LEDs to make this Shoebox light an easy upgrade for outdoor lighting. Cast aluminum keeps LEDs cool while providing a modern, stylish design. Wide variety of wattages available.

Photocell is included.

Mounting options: Slip-fitter, Arm, Trunnion



Part Number	Equivalent	Wattage	Color	Lens	Life (Hours)	Wty (Yrs)	Lumens	Ballast	Std Pack	DLC/ES #
U-SB062T5D*50K	250W	60W	5000K	Clear	50,000	5	9,200	N	1	PWPENGZ9
U-SB102T5D*50K	400W	100W	5000K	Clear	50,000	5	13,000	N	1	PAZ9SFUD
U-SB152T5D*50K	750W	150W	5000K	Clear	50,000	5	21,000	N	1	PX5XGGFP
U-SB202T5D*50K	1000W	200W	5000K	Clear	50,000	5	26,000	N	1	PIA7ZGMF
U-SB302T5D*50K	1500W	300W	5000K	Clear	50,000	5	38,000	N	1	PMTGSQ4X

When ordering, replace * with "A" for "Arm", "S" for "Slip-fitter", and "T" for "Trunnion".

LED Wall Packs

LED Wall Packs with new optics increase light output and efficacy to reduce shadows and create safe, brightly-lit outdoor environments in parking garages and entrances, public areas, schools, hospitals, hotels and outdoor walkways nationwide.

These LED fixtures are energy-efficient replacements for 100 to 400 Watt metal halide fixtures. They qualify for rebate, save energy, lower maintenance costs, and prevent light pollution.

Photocell is included.



Part Number	Equivalent	Wattage	Color	Lens	Life (Hours)	Wty (Yrs)	Lumens	Ballast	Std Pack	DLC/ES #
U-WP25W2750KP	100W MH	25W	5000K	Striated	50,000	5	2250	N	1	PDJDKF7M
U-HWP45W2750KP	175W MH	45W	5000K	Striated	50,000	5	4950	N	1	P1K2HEPM
U-HWP07W2750KP	250W MH	70W	5000K	Striated	50,000	5	7200	N	1	PMRNCPKS
U-HWP10W2750KP	400W MH	100W	5000K	Striated	50,000	5	11000	N	1	P5RTDQ36



◀ Our LED Wall Packs are broad-beamed, high intensity lights that help illuminate an outdoor space on commercial buildings, outdoor facilities, or anywhere in-between.

Retrofit Kits



Designed to convert 4' or 8' T12 or T8 industrial and strip fixtures to more efficient T8, T5, or LED technology. Choose between retrofitting with a reflector for enhanced performance or simply a ballast cover. Both kits utilize a Universal Socket Bracket engineered to fit most fluorescent channels from 4" to 5.25" in width.

Part Number	Size	Wattage	Color	Lens	Life (Hours)	Wty (Yrs)	Lumens	Ballast	Std Pack	Certifications
U-SKB2328B4L11	4.25"	NA	NA	NA	NA	1	NA	Both	16	NA
U-SKB2328B5L11X1	5.00"	NA	NA	NA	NA	1	NA	Both	16	NA

Bulb & Base ID Guide

Reading the Stamp Printed on the Bulb:

EXAMPLE: F40T12/CW/RS

F fluorescent

40 rated nominal wattage

T indicates shape; this lamp is shaped like a tube

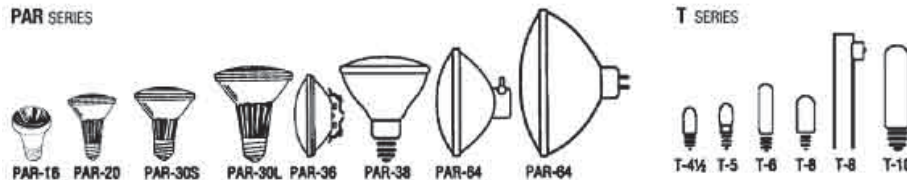
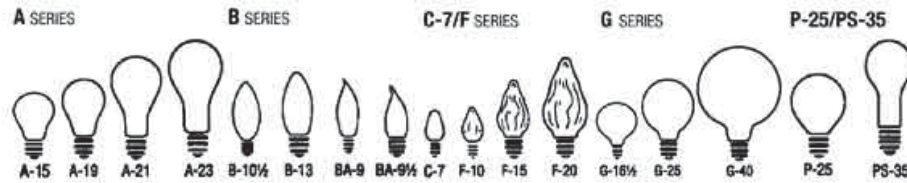
12 diameter in eighths of an inch; this lamp is 12/8 (1.5) inches in diameter

CW color; this lamp is a cool white lamp

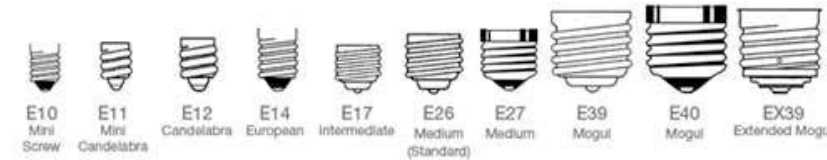
RS mode of starting; the lamp is a rapid-start lamp. Preheat lamps do not have "RS" as a suffix



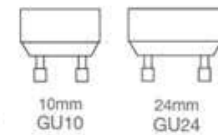
Bulb Shapes



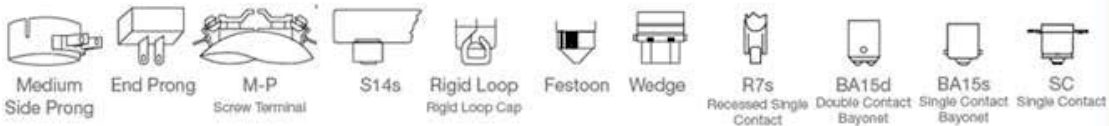
SCREW BASES



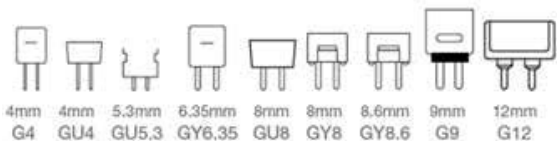
TWIST & LOCK BASES



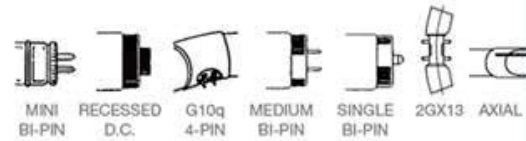
SPECIALTY BASES



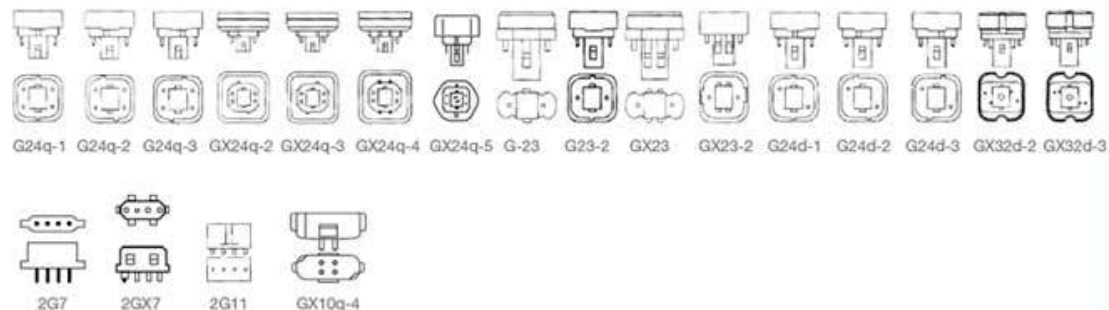
BI PIN BASES



FLUORESCENT PIN BASES



COMPACT FLUORESCENT PLUG IN LAMP BASES



*Bulb guide is not necessarily representative of all existing variants, or of our available options.

Commercial **LED** Lighting



OFFICE | WAREHOUSE | REFRIGERATION | OUTDOOR



Innovative Lighting
109 Progressive Ave.
Roland, IA 50236
515-777-7444
www.innovativelight.com

