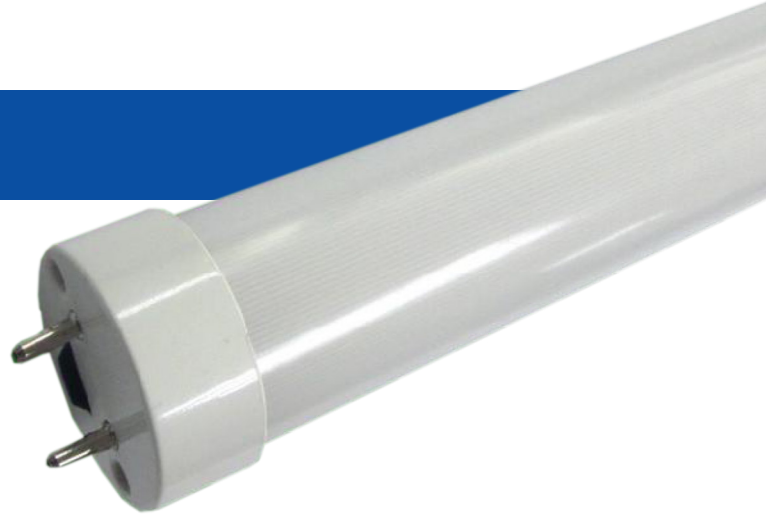


OPTIFIT LED TUBE

The **OptiFIT** LED TUBE fits into existing electronic ballast and magnetic ballast configurations without any additional modification to the fluorescent fixture. Simply slide these into place and start saving energy. Ballasts can also be bypassed entirely as this fixture can be run on direct line voltage.



PRODUCT DETAILS

Intended Use

The OptiFIT LED Tube is designed for retrofitting existing fixtures.

Construction & Materials

High quality aircraft aluminum rail incorporating heat sink technology greatly increases fixture life. Shatterproof polycarbonate lens.

Optical System

Frosted or clear lens available.

Electrical System

100-277VAC

Installation

Quick and easy installation into existing fluorescent fixtures- installed in the same fashion as fluorescent bulbs.

Listings

UL Listed
CE Compliant
DLC Qualified
NSF Listed
RoHS Compliant

Warranty

The Universal T8 LED lighting products come with a five year warranty for parts manufactured and furnished by Innovative Lighting, LLC. Standard terms and conditions apply.



Part Number	CRI (typical)	Color Temperature	Efficacy	Average L70 Life (hrs)	Dimensions	Input Voltage	Energy (Watts)	Lumens (typical)
729-6024-1	>80	4000 K	110 lm/W	50,000	48"L 1"D	100-277V	18	1980

3000K and 5000K color temperatures available