

6" Recessed Downlight

The 12W, DC Regulated 6" DownLight provides an even distribution of high-output light.



Product Details

Intended Use

The 12W Regulated DC 6" DownLight is designed for use in applications where DC power is readily available.

Construction Materials

Aluminum. Polycarbonate lens.

Listings

UL 2108 listed. RoHS compliant.

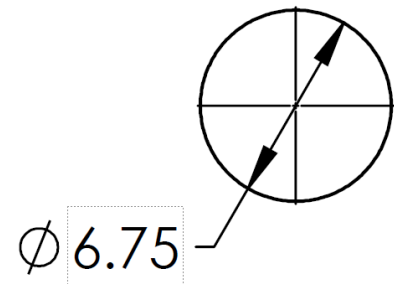
Warranty

DC 6" DownLights come with a one-year limited warranty for parts manufactured and furnished by Innovative Lighting, LLC. Standard terms and conditions apply.

Installation

Quick and easy installation by connecting the positive and negative wires to a Class 2, LPS DC supply with a maximum voltage of 60VDC.

Mounting hole diameter: 6.75"



Product Details (Continued)

Mechanical

Dimensions: 7.5" x 7.5" x 2.1" (L x W x D)



Electrical System

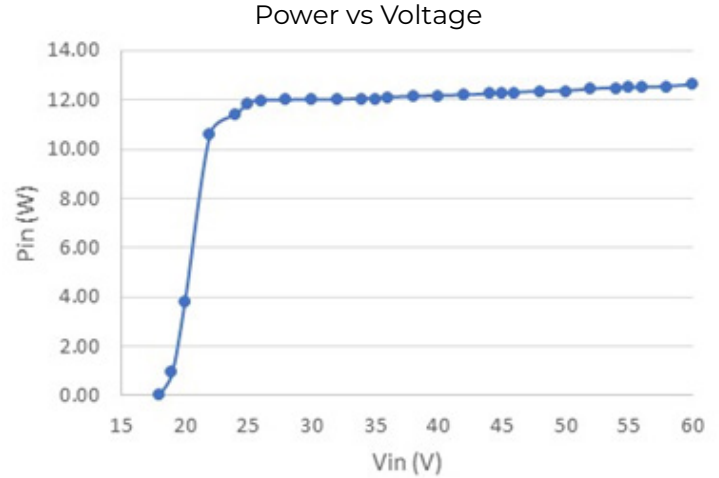
Regulated DC LED Driver

Input: 22-60VDC (Nominal at 24VDC)

Connections:

2x 16AWG Cable, 1' Long

Red = Positive (+) Black = Negative (-)



Part Number	CRI (nominal)	CCT (nominal)	Circuits	Efficacy (lm/W)	Average L70 Life (hrs)	Dimensions (inches)	Energy (Watts)	Lumens (typical)
793-6156-60-1	83	4000K	1	108	54,000	7.50 x 7.50 x 2.1	11.3	1,223

ORDERING INFORMATION

Light Fixture (example: 793-6156-60-1)

7	9	3	-	6	1	5	6	-	60	-	1
Series				LED Color	Housing Color	Wattage	Diam		Build		Revision

LED COLOR

6 = 4000K

HOUSING

1 = White

WATTAGE

5 = Mid Power

DIAMETER

6 = 6"

BUILD

Type Specific

REVISION

Type Specific