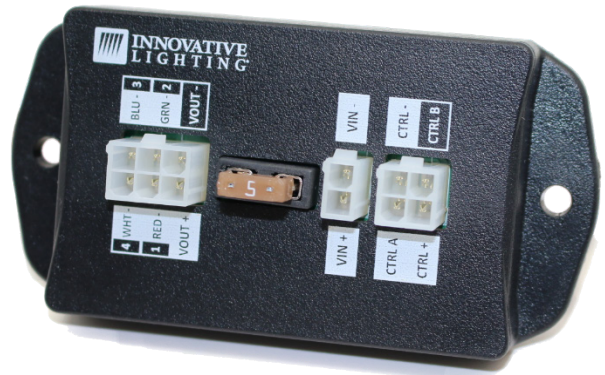




The Dynamic Lighting Controller is a low-profile, 4-channel LED lighting controller ideal for multicolor (RGBW) LED lights. The Controller supports multiple control methods; power cycling, knob or IR Remote



Product Details

Intended Use

The Dynamic Lighting Controller is ideal for both indoor and damp applications requiring control of LED lighting.

Construction Materials

Flame-retardant ABS plastic

Ratings

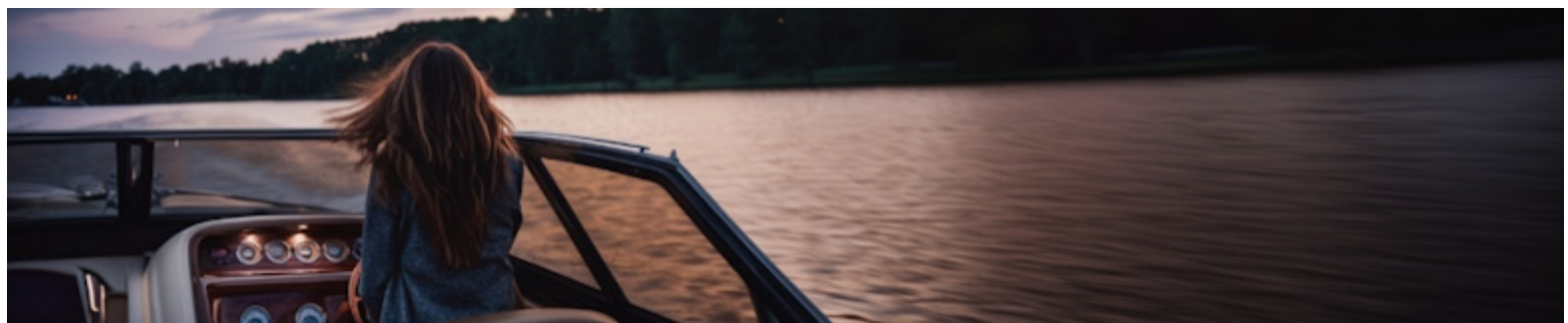
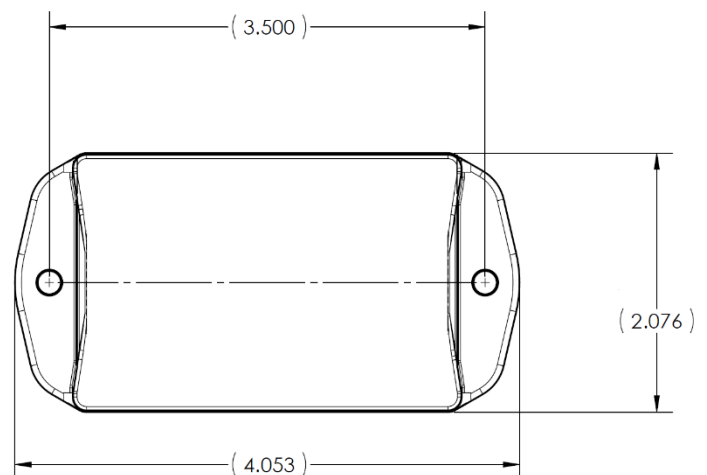
Water resistant. Corrosion resistant. Shock and vibration proof. UL94 V-0 flame rating.

Warranty

Dynamic Lighting Controllers come with a one-year limited warranty for parts manufactured and furnished by Innovative Lighting, LLC. Standard terms and conditions apply.

Installation

Quick and easy installation using molded-on flanges and cabling harnesses.





Product Details (Continued)

Mechanical

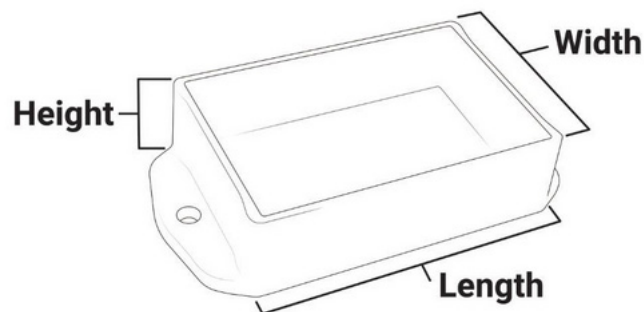
Dimensions: 4.05" L x 2.08" W x 1.00" H

16/20awg, 12" long wire leads

Electrical System

Voltage: 12 – 24 VDC

Current: 3A/Channel; Max 5A Combined



ORDERING INFORMATION

Dynamic Lighting Controller (example: 055-9001-4)

0	5	5	-	9	0	0	1	-	0	0	0	-	1
Series				Base Part					Variant				Package

BASE PART

9001 = Toggle Controller

9002 = Control Knob

9003 = IR Receiver

9004 = Wire Harness

VARIANT

000 = RGBW

PACKAGE

1 = Bulk

4 = Kit

7 = Packaged

Accessories

Part Number	Color	Description
TBD	Silver	Mounting Screws
C300-0057	Red	5A Mini Blade Fuse
797-9902-1	White	IR Remote Control